

Now

Bach LH G Major (diatonic)

LH Gm RH Gm harmonic (modal)

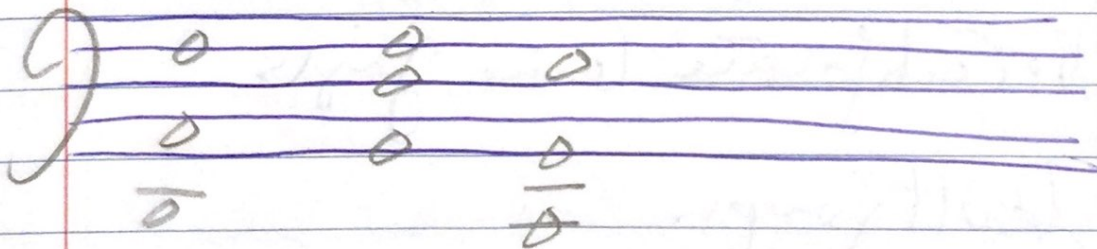
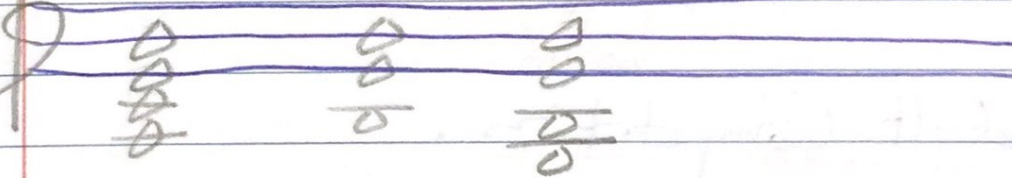
Transition in Gm high register / mid

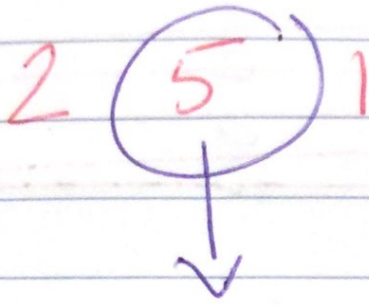
G jazz harmonies

Some chords too high

Ending superb.

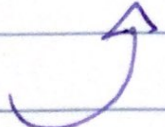
lower writing for 2-5-1 in C





Replace 5 / Tritone subs

ii VII₇ I₇

Another  is || LH D^b 1-5-10
RH E^b Major chord

Another one: LH D^b 1-5-10
RH diminished chord
of ~~F~~ (or A^b)

Handwritten musical notation on a grand staff. The treble clef staff contains four chords: F major (F-A-C), C major (C-E-G), F major (F-A-C), and C major (C-E-G). The bass clef staff contains four chords: C major (C-E-G), F major (F-A-C), Bb major (Bb-D-F), and G major (G-B-D). Red lines highlight the notes in each chord across both staves.

Transition into jazz section

Play as chords or give it the same rhythmic treatment as the previous higher progression