

MIKE

AT THE RIVER

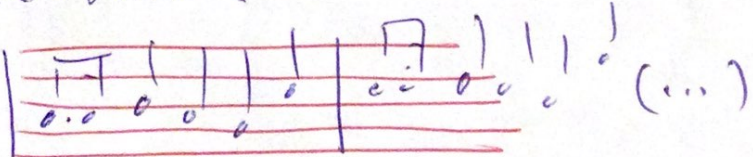
Consistency w/ arrangement.
What sound?

Using intro/bridge for material

● Mostly Copland arr.

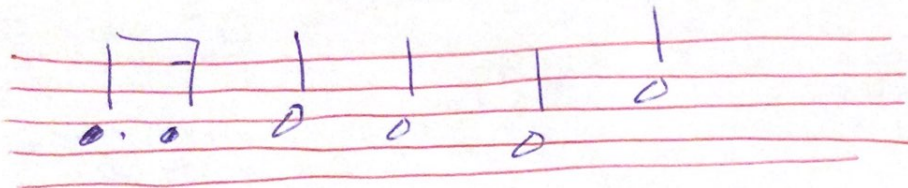
High notes — crossing LH over RH
low octaves — w/ 5th and 10th

INTERLUDE DEVELOPMENT

Take the idea  (...)

● start it again on the last note

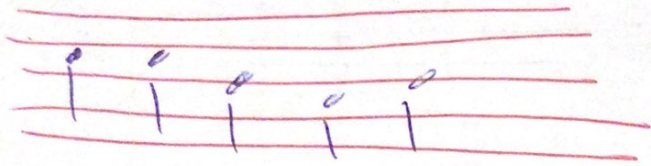
Play with the meter of the theme



Elongate any value
Select portions

Eric Whitacre → When David

Working UP



G → Em - F - Fm - C

Lydon

Cadence

Now there to middle/low region
C pedal over D major

Love Me Tender theme
over C · $\frac{D}{C}$ · Fm

Incorporate the heart beat @ the pedal note C